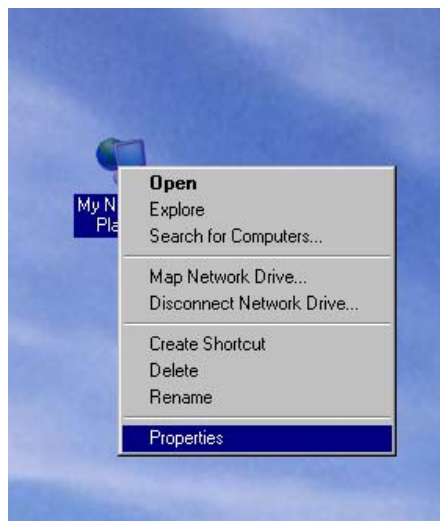


2.3 Configuration of the TCP/IP address

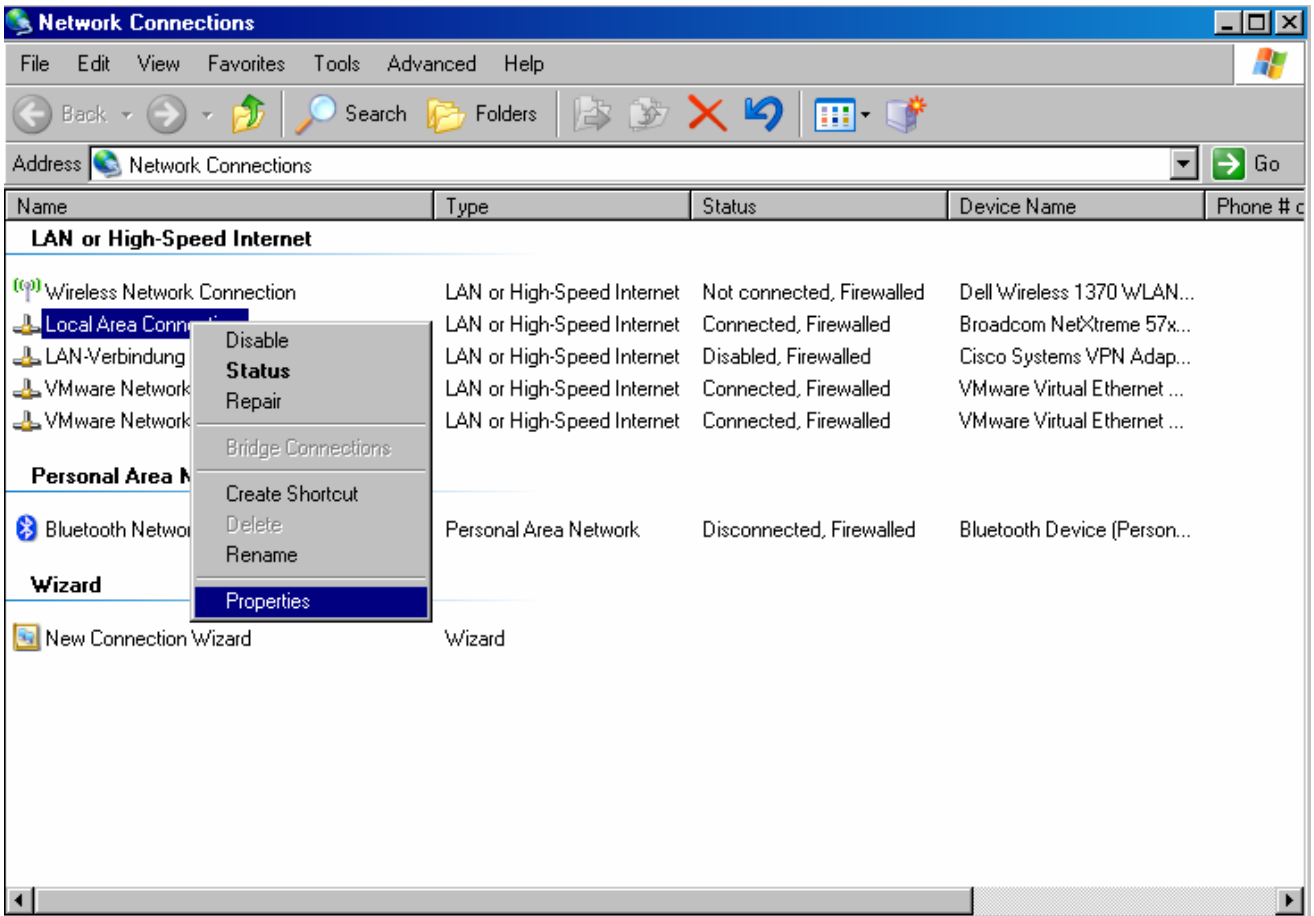
Note:

This instruction describes the complete procedure from the beginning including the necessary Windows configurations. Depending on the configuration of the customer's network and your own experience you may take shortcuts where appropriate.

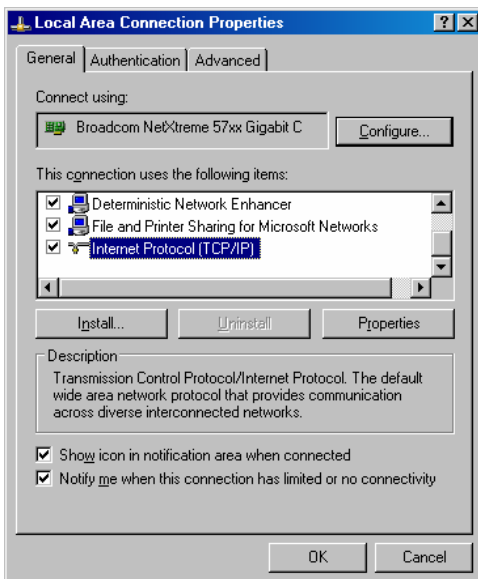
1. Find out which IP-address needs to be configured within the DSC 1.
 - a) If the DSC 1 in question shall be connected to a company's network you need to get a static IP-address from the company's IT department..
 - b) If the DSC 1 will be set up in an independent 'stand alone network' you can theoretically define any IP-address. Recommendation: Reserve from the address range designated for local networks a 256 block. 192.168.xxx.yyy. Select xxx, class C net and reserve this consecutive 256-address block for all concerned instruments.
2. To continue you need a PC with local administrative rights.
3. Shut down the PC, connect the crossed Ethernet cable to the DSC 1, start PC
4. Execute a right mouse click on ,My Network Places:



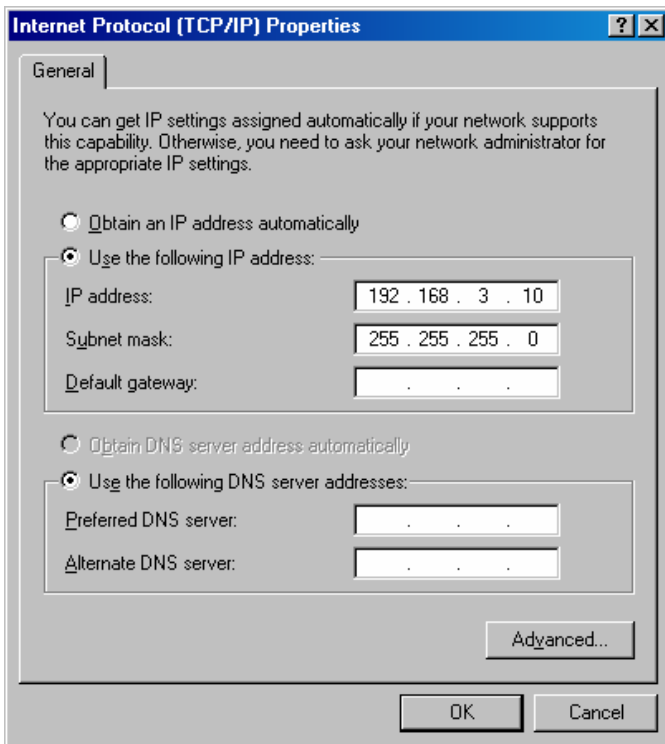
5. With a right mouse click select Properties from the active / to be used LocalAreaConnection.



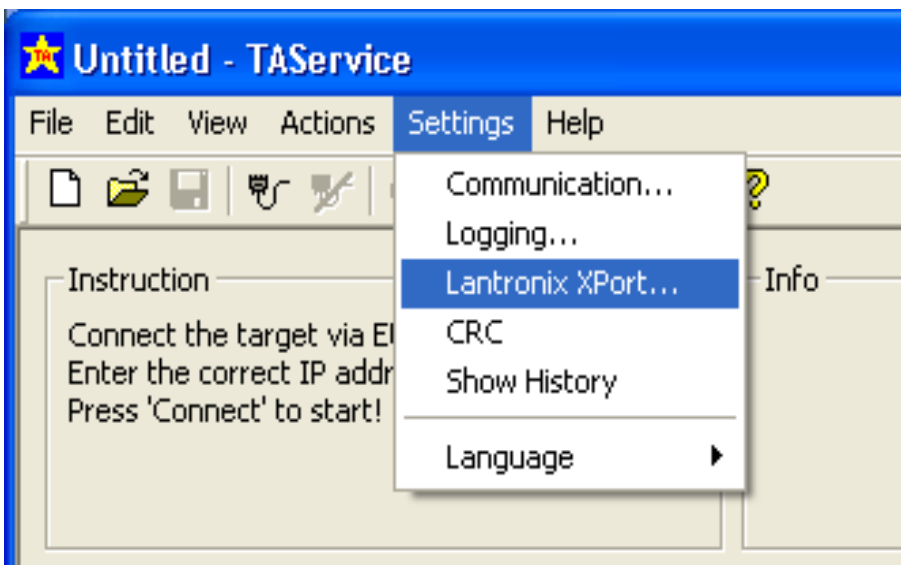
6. Choose the General tab, select Internet Protocol (TCP/IP) and click on properties.



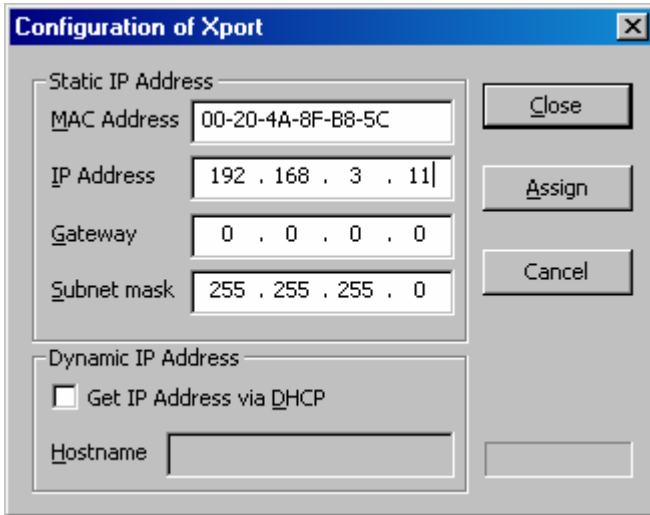
7. Configure the PC with a valid IP-address and subnet mask. Valid is an address which starts with the same address group as the **to be defined (reserved)** IP-address of the DSC 1.



8. Start the TA-Service Tool, go to Settings and select Lantronix XPort...
Make sure that in the directory where the TAservice Tool is located there is also the file "XportSetup.cfg".



- 9. With the DSC 1 switched on, key in the MAC address which you can find on the sheet accompanying this instrument. If this sheet is missing you can find the MAC address written on the Lantronix XPort module which is mounted on the rear wall of the microprocessor board box.



- 10. If the configuration was successful you should get the following Message.
Make sure the line "Xport setup file executed: 'XportSetup.cfg' is present. If not, the system will probably not work!



- 11. The module is now configured and is ready for being used.