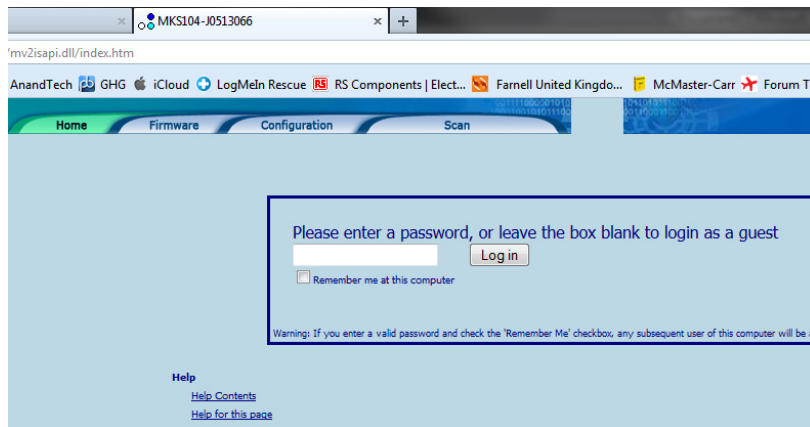


Shut down the Process Eye Professional software

Open the browser and enter the serial number of the Control Unit – Or, run RGA Device Manager, when the control unit appears in the list, right-click and choose “Browse to instrument” from the menu.

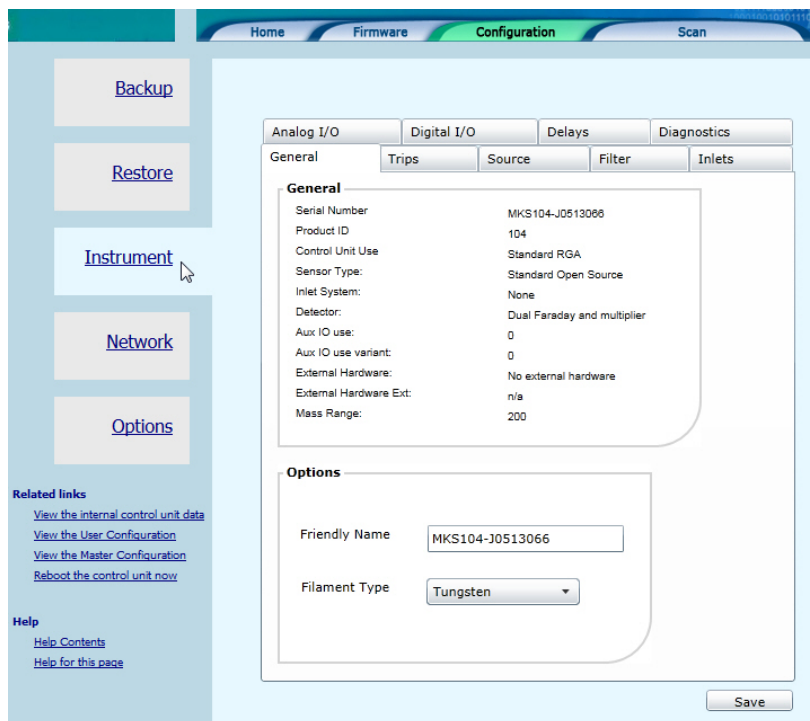
When asked for a password, enter:

procprof



Select the CONFIGURATION tab

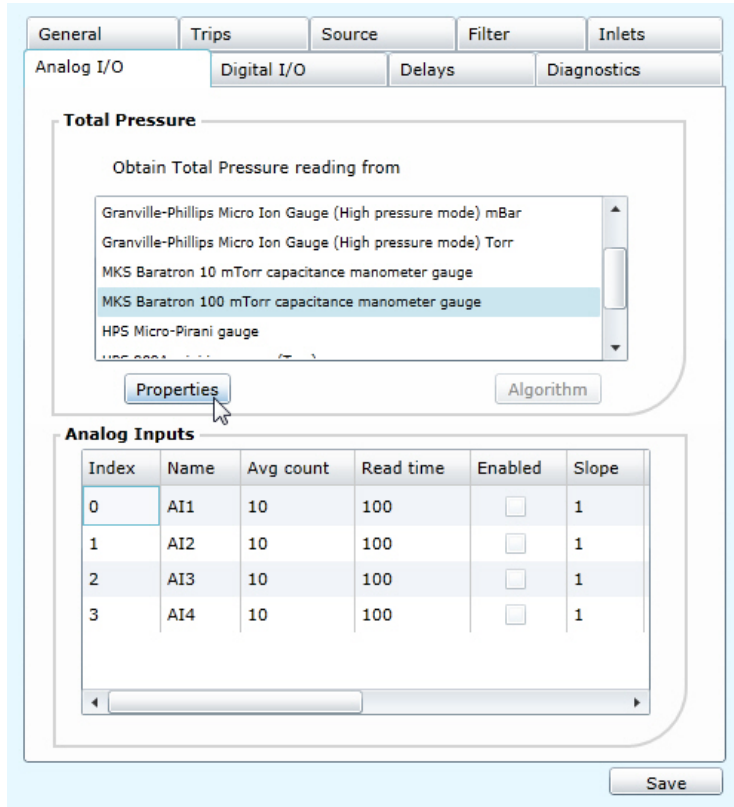
Select INSTRUMENT



Select the ANALOG IO tab

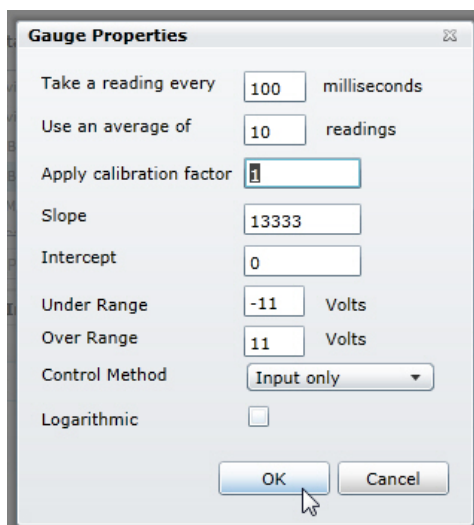
If not already highlighted, click on MKS BARATRON 100mTORR CAPACITANCE MONOMTERE GAUGE from the list

Click PROPERTIES



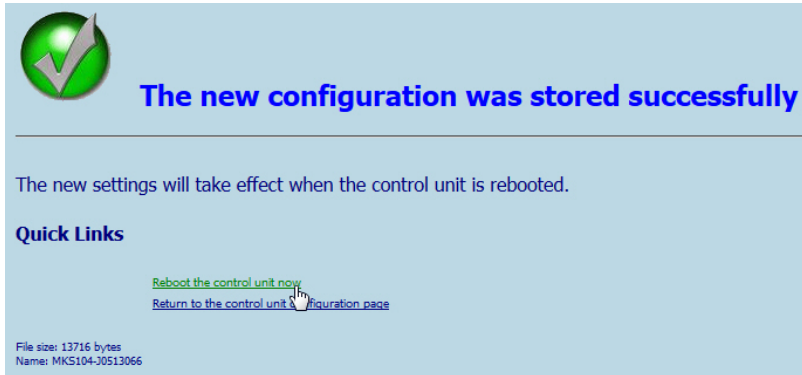
Overwrite any value present in the APPLY CALIBARTION FACTOR field with the value 1

Click OK



Click SAVE

Select REBOOT THE CONTROL UNIT NOW option to store the settings and restart the instrument



The screenshot shows a success message on a light blue background. At the top left is a green circular icon with a white checkmark. To its right, the text "The new configuration was stored successfully" is displayed in bold blue font. Below this, a horizontal line separates the header from the main content. The main content includes the text "The new settings will take effect when the control unit is rebooted." followed by a "Quick Links" section. Under "Quick Links", there are two links: "Reboot the control unit now" in green text and "Return to the control unit configuration page" in blue text. At the bottom left, there is small text: "File size: 13716 bytes" and "Name: MKS104-J0513066".

Run up the instrument as normal and check the Bypass pressure